

MUSIC FOR PRAGUE 1968

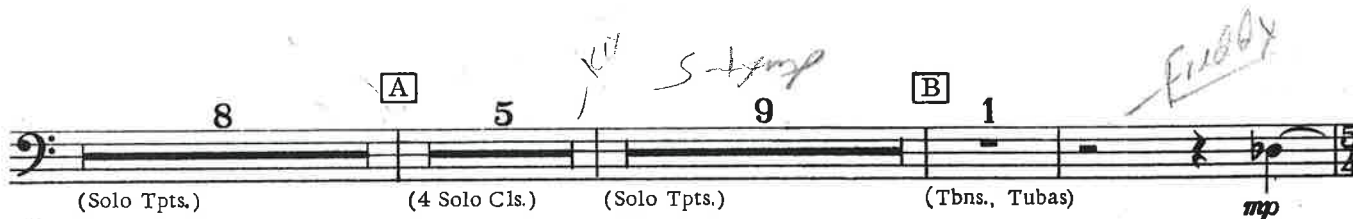
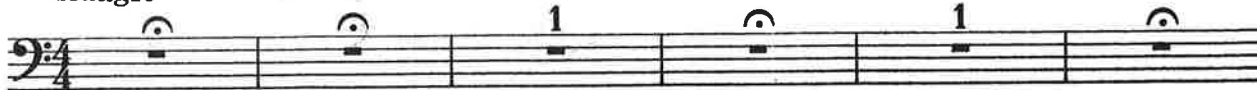
for Concert Band

Baritone, b. c. (div.)

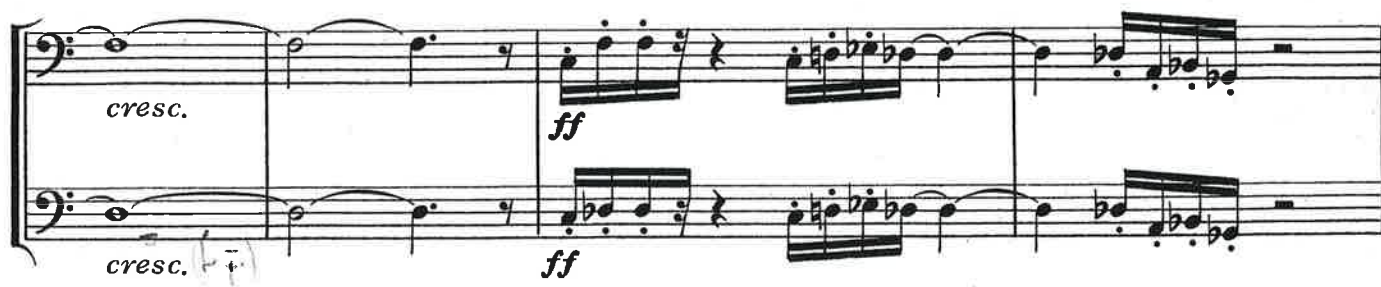
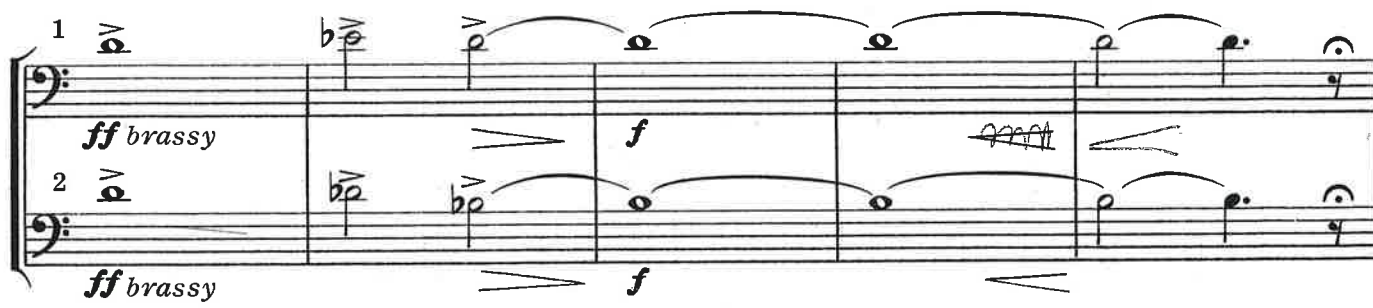
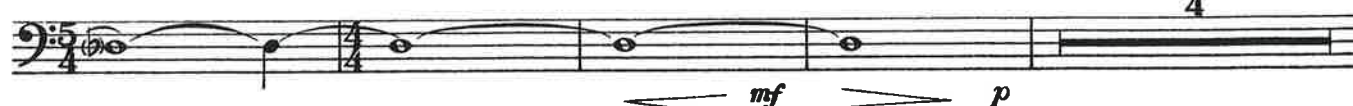
KAREL HUSA

I. Introduction and Fanfare

Adagio



Allegro 4



Mvt. I cont.

Baritone, b. c.

Husa

1 (brassy) E nat.

5 f (brassy) ff ma cantando

2 f nat. ff ma cantando

F end

p ff 1

p ff

gliss. ff ff fff

gliss. ff fff fff

G 2 mp cresc. molto

mp cresc. molto

gliss. ff gliss.

gliss.

H rit. poco a poco 10 Adagio 8

fff

Profanation Baritone B.C.

Bernstein

31 $2+3+3$

3+3 $2+3+3$ $2+2+3$

32 $3+3+2$ $3+2$ 3 $3+3+2$ $3+2$ 3 33 $3+2$ 3

34 $2+2+3$ $2+2+3$ $2+2+3$ 35 $2+2+3$ *ff*

36 $2+3$ 3 $2+3$ 37 *ff*

38 *8va* 2 2

39 3 $2+3+2$ 40 *ff*

G.P. *fff* *fff*

end

THE ENGULFED CATHEDRAL

(La Cathedrale engloutie from PRELUDES, Book I)

EUPHONIUM B.C.

CLAUDE DEBUSSY
Freely transcribed by
Merlin Patterson

Profoundly calm, as if in
a sweetly sonorous mist (♩ = 48)

Sweetly, fluidly

Without nuance

7 8 15

Conductor
pp

Gradually emerging from the mist

Gradually faster, without rushing

17 23

pp p mp mf ff

29 Sonorous, without harshness

26 29

ff fff

33

sfz

49 Slightly faster, expressively

43 49

mf mp p pp solo p

51

tutti mp

58 65

mf mp

In the original tempo

74

pp (As an echo of the preceding phrase)

80

p end

With the sonority of the beginning

86

p mp

Temp 132 d=d

X

Daugherty - Bells for Stokowski Euph.

XI - Stringendo

The image shows a handwritten musical score for six Euphonium parts, labeled 'Euph. 1' and 'Euph. 2' on each staff. The music is written in bass clef with a 2/2 time signature. The first staff begins with a dynamic marking of *fff* and includes an '(a2)' marking above the first note. The notation consists of eighth and quarter notes, some with slurs and accents. The sixth staff concludes with a dynamic marking of *ff*. The score is divided into measures by vertical bar lines.

Stringendo

Euphonium

Catfish Row

Gershwin

$\text{♩} = 112 - 116$

$\text{♩} = 88$

$\text{♩} = 88$

mm. 17 - 27

, 341 - 354

, 499 - 505

17 Start

Handwritten musical score for Euphonium, measures 17-27. It consists of three staves. The top staff is marked 'Euph.' and 'f'. The middle staff is marked 'Euph.' and 'ff'. The bottom staff is marked 'Euph.' and 'f'. A bracket on the right side of the staves is labeled 'mm. 27'.

mm 341 - 354

Start

Handwritten musical score for Euphonium, measures 341-354. It consists of three staves. The top staff is marked 'Euph.' and 'f'. The middle staff is marked 'Euph.' and 'mf'. The bottom staff is marked 'Euph.' and 'f'. A bracket on the right side of the staves indicates the end of the section.

Euphonium

Catfish Row

Gershwin

$\text{♩} = 112 - 116$

$\text{♩} = 88$

$\text{♩} = 88$

mm. 17 - 27

, 341 - 354

, 499 - 505

mm. 499 - 505

Con Brio

start

end

Euph.

Euph.

Euph.

Euph.

end

Handwritten musical score for Euphonium, Catfish Row, Gershwin. The score consists of four staves. The first staff is marked 'Euph.' and contains a melodic line with a bracketed section labeled 'start' and 'end'. The second staff is also marked 'Euph.' and continues the melodic line. The third staff is marked 'Euph.' and contains a more complex melodic line with dynamics like 'f' and 'a2'. The fourth staff is marked 'Euph.' and ends with a bracketed section labeled 'end'.

Euph etude page 1

56

Allegretto (♩=104)

No. 42

The musical score for Euphonium etude No. 42, page 1, is written in bass clef with a key signature of one flat (B-flat). The tempo is marked 'Allegretto' with a metronome marking of quarter note = 104. The piece consists of eight staves of music. The first staff begins with a quarter rest followed by a series of eighth notes. The second staff continues with eighth notes and rests. The third staff introduces a key change to two flats (B-flat and E-flat) and features a mix of eighth and sixteenth notes. The fourth staff continues with eighth notes and rests. The fifth staff features a key change to one flat (B-flat) and includes a dynamic marking of 'rallent'. The sixth staff returns to the original key signature and tempo, marked 'a tempo'. The seventh staff continues with eighth notes and rests. The eighth staff concludes the piece with a final cadence.

Euphonium etude page 2

57

